

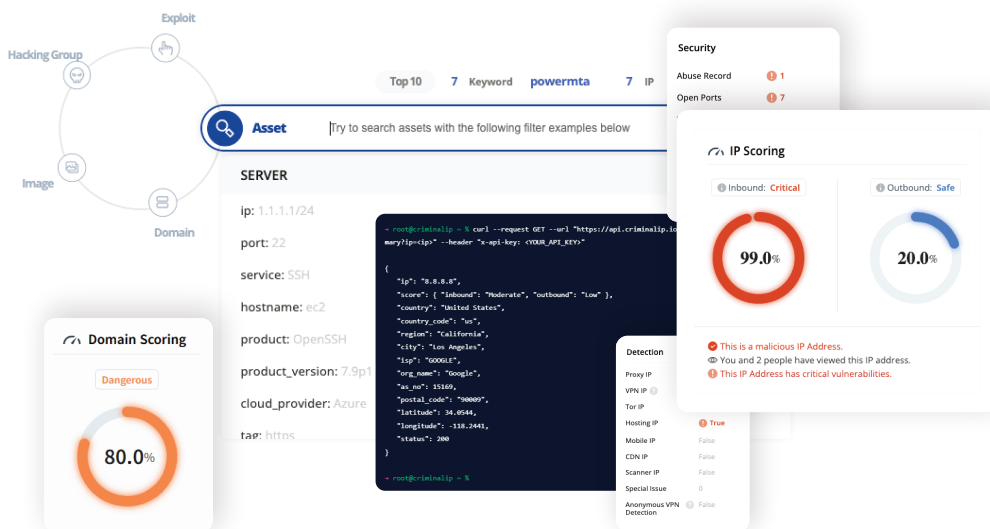


**Criminal IP TI**

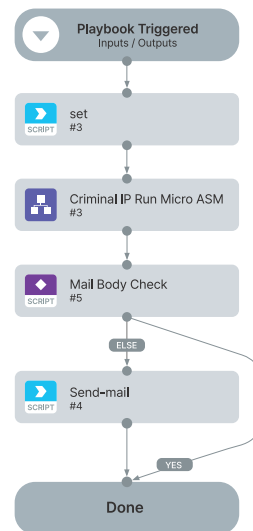
Criminal IP **ASM**

# Advanced Cyber Threat Intelligence

Criminal IP Threat Intelligence combines comprehensive IP and domain intelligence to help security teams identify, analyze, and respond to emerging threats.



Example of Palo Alto Integration



## Criminal IP Main Features

### Unmatched IP Threat Intelligence Coverage

Access the industry's most extensive IP intelligence database, providing deep insights into malicious activities, infrastructure, and emerging threats across the globe.

### Real-Time Domain Intelligence

Stay ahead of threats with instant domain scanning capabilities that detect and analyze suspicious activities as they emerge.

### Advanced Filters & Tags

Pinpoint exactly what you're looking for with our comprehensive system of threat tags and customizable filters, transforming vast data into actionable intelligence.

### Enterprise API for Seamless Security Workflow Integration

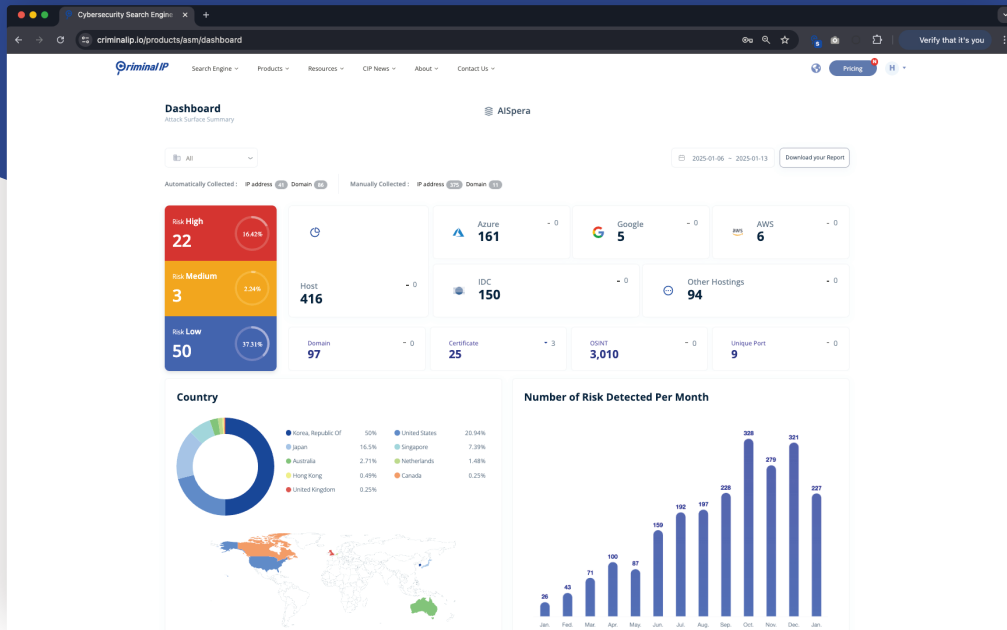
Streamline your security operations with our enterprise-grade API that seamlessly integrates threat intelligence into your existing security workflows and automation processes.

### Integrated with Leading Security Tools and Platforms

Enhance your security stack with our pre-built integrations across leading security platforms, enabling immediate threat intelligence enrichment without additional development.

# Threat Intelligence-Powered Attack Surface Discovery & Protection

Criminal IP ASM delivers comprehensive visibility and monitoring of your external assets, combining continuous discovery, threat detection, and security assessment with Criminal IP's integrated threat intelligence capabilities.



- Detect mismatch in cloud assets
- Identify discrepancies in server locations
- Detect discrepancies in ISP information
- Assess application status
- Track additions and changes to IT assets
- Identify assets exposed to new CVEs

## Criminal IP ASM Main Features

Criminal IP ASM automatically detects IT assets scattered across various domains from a single domain and visualizes them on the dashboard.

### Dashboard

Provides a comprehensive overview of corporate IT assets

### IP Assets (Application)

Provides overview information of detected IP assets

### Domain/Certificates

Offers threat information related to domains/subdomains/certificates

### Risks

Automatically provides threat information for registered assets (IP, Domain)

### OSINT (Google Hacking)

Provides a list and keywords of sensitive information, including files and servers exposed on Google

### Dark Web

Automatically monitor all leaked credentials on the dark web

## Trusted By



## Technology Alliances and Integrations



## AI Spera

AI Spera America Inc.  
19700 S. Vermont Ave. Suite #200 Global Business Center,  
Torrance, CA, 90502, U.S.A.

✉ [support@aispera.com](mailto:support@aispera.com)

**Criminal IP**  
[www.criminalip.io](http://www.criminalip.io)

